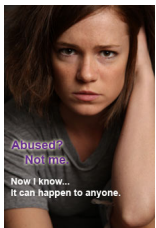


Domestic Violence and Abusive Relationships

- Are you ever afraid of your partner?
- Does your partner threaten to hurt you?
- Does your partner control all the money?
- Has your partner ever pushed you or shoved you, thrown things at you, or forced you to have sex?
- Does your partner stalk you and show up uninvited at your job or when you're out with friends?



If these experiences are part of your life, you are not alone and help is available. **If you are being abused, call the San Francisco Domestic Violence Hotline at 415-864-7422** 24 hours a day, 7 days a week. If you are in immediate danger, call 911.

What is Domestic Abuse?

Domestic violence, sometimes called battering, relationship abuse, or intimate partner violence, is a pattern of behavior used to establish power and control over another person through fear and intimidation, often including the threat or use of violence. Domestic violence is a crime that can include physical abuse, emotional abuse, economic abuse, and sexual abuse. Batterers use threats, intimidation, isolation, and other behaviors to maintain power over their victims. Domestic violence impacts everyone, regardless of income, race, ethnicity, sexual orientation, or religion.

Remember, you are not to blame. You have a right to be safe and feel secure in your own home.